

# ALEXANDER VALLEY VINEYARDS

## 2018 Sin Zin - 375ml

In 1978 Hank Wetzel produced our first vintage of Sin Zin and wine drinkers fell in love with the elegant, balanced flavors of Zinfandel from Alexander Valley Vineyards. Four decades later Sin Zin is still charming fans. The 41st vintage continues that tradition and to celebrate the richness of this wine, we've updated the label to full color.

The 2018 growing season began a bit cooler than the past few vintages, but we had a near perfect fruit set with moderate summer temperatures and relatively few heat spikes. The mild weather led to a longer hang time, allowing the grapes to ripen slowly with excellent flavors and balanced natural acidity. This vintage is a blend of 13 Zinfandel lots, each lot was de-stemmed, fermented separately, and then aged in 25% new American oak barrels for 14 months.

This vintage shows great color, with a dark purple, red hue. There are spicy, fresh fruit aromas of dark fruits, black cherry and black pepper along with a touch of vanilla.

Sin Zin is a California classic. This 2018 is a rich Zinfandel with flavors of black cherry, strawberry, plum, black pepper chocolate and slight violet. This is a mouth filling, lush Zinfandel with great balance and a nice smooth finish.

**Food Pairing:** This is one of the most versatile food wines we produce. For starters try pairing with a classic antipasto platter or fried zucchini blossoms. Move onto the main course with pizza, tomato based ragus, roast chicken, or grilled meats. Finish up with dark chocolate and you have the perfect meal.

**Accolades:** 2019: 90 points & Gold Medal - *Toast of the Coast Wine Competition*  
2018: Gold Medal - *San Francisco Chronicle Wine Competition*

**Profile:** • Dark fruits & spicy pepper  
• Smooth with great balance

### About Alexander Valley Vineyards:

Everyone is always curious about the origin of Sin Zin's label. Leafing through an old art history book, Katie Wetzel Murphy came upon a captivating illustration, a German etching, drawn by Moritz von Schwind around 1843. The image was titled: Des Knabben Wunderhorn, meaning "The Boy's Magic Horn". Katie thought the image looked perfect for a wine label, and its bacchanalian character inspired her to name our rich and robust wine Sin Zin. The first vintage debuted in 1978 and was given to friends and family. The label has been updated four times since that first vintage.



### Technical Data:

**Grapes:** 100% Zinfandel

**Appellation:** Sonoma County

**Harvest:** September 4 - 16, 2018

**Closure:** Cork **Case:** 12 bottles

**Alcohol:** 14.9% **pH:** 3.67 **TA:** 6.7g/L

**Size:** 375ml **SRP:** \$11 **Cases:** 300

**First Vintage:** 1978 **UPC:** 085798 07871-4

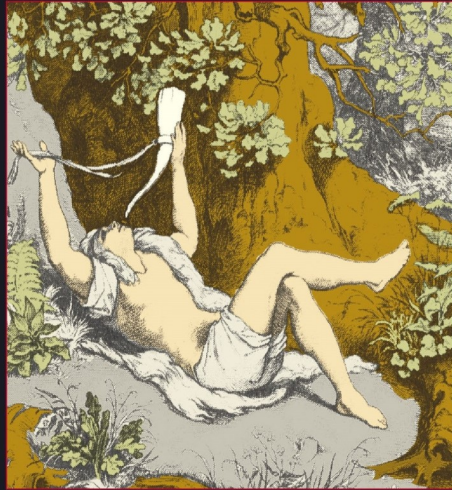
*Our family creates wines of distinction for everyone.*

Healdsburg - Sonoma County - California

avvwine.com



# Sin Zin



## 2018 ALEXANDER VALLEY ZINFANDEL

ALCOHOL 14.9% BY VOLUME

### 2018 SIN ZIN SONOMA COUNTY ZINFANDEL

2018 marks 41 years of Sin Zin at Alexander Valley Vineyards. Our first vintage in 1978 was given out to family and friends, quickly attaining cult status among those lucky to receive a few bottles. The wine was so popular, that in 1980 we offered a few cases for sale. Over the years the label has evolved, while the wine continues to showcase the rich flavors of Sonoma County Zinfandel.

For the over four decades this iconic wine has impressed wine lovers and critics across the country. The 2018 has a bright expressive nose that draws you to the glass, while the lush fruit flavors of raspberry, red cherry and plum along with a black pepper finish keep you coming back again and again.

Sin Zin is the original California classic -  
what's in your glass?

PRODUCED AND BOTTLED BY  
ALEXANDER VALLEY VINEYARDS  
HEALDSBURG • SONOMA COUNTY • CA  
avvwine.com ALCOHOL 14.9% BY VOLUME



GOVERNMENT WARNING: (1) ACCORDING TO THE SURGEON GENERAL, WOMEN SHOULD NOT DRINK ALCOHOLIC BEVERAGES DURING PREGNANCY BECAUSE OF THE RISK OF BIRTH DEFECTS. (2) CONSUMPTION OF ALCOHOLIC BEVERAGES IMPAIRS YOUR ABILITY TO DRIVE A CAR OR OPERATE MACHINERY, AND MAY CAUSE HEALTH PROBLEMS.

CONTAINS SULFITES